

High Precision Dead Weight Testers

Hydraulic

H6900

Bench-top / Table-top Model

Ideal for Fine Increments & for Medium Volume Calibration. Ensures – Easy & Controllable Pressure generation for Calibrating Pressure Gauges / Transducers / Transmitters, Transfer Standards, Recorders, Digital Calibrators etc.

Screw Pump with built-in Priming Pump

SALIENT FEATURES

Engineering Units : bar / Kg/Cm ² / psi (Kpa & Mpa also available)
Adjustable Foot & Spirit Level
Piston Calibrated thro' "Cross Floating Techniques"
Calibrated to Standard Gravity (Optional : Calibration to Local Gravity as per Customer's requirement)
Accuracies Traceable to International Standards
Non-Magnetic Stainless Steel Weight Sets
Calibration Certificate – for overall Accuracy + PCU (Area) + Weights (Mass) from NABL Accredited Lab – as per ISO/IEC 17025:2015
DWTCal Calibration Software
Motorized Model – Optional



* Accessories shown above are not part of standard equipment

SPECIFICATIONS

Ranges	35 / 70 / 100 / 160 / 350 / 600 / 700 bar	
Piston	Single / Dual	} Refer Table 2
Standard Accuracy	±0.015% of Reading	
Traceability	International Standards	} Refer Table 1
Weights	Non-Magnetic Stainless Steel	
Pressure generation	Thro' Priming Pump & Screw Ram	
Standard Corrections	Gravity : 9.80665 m/s ² * / Temperature : 23°C / Air Density : 1.2 Kg/Cm ²	
Weight (approx.)	Instrument : 19 Kg. ; Weight Sets : 8 to 33 Kg.	Refer Table 2
No. of Weights	12 to 15	
Instrument Dimensions	530 x 390 x 230 mm (L x W x H)	
Operating Fluid	Oil	

Table 1

Model	Accuracy	PCU	Weight Set	Certification	Remarks
H6900	±0.015% of Reading	Tungsten Carbide Piston & Matching Hardened Cylinder	Non-Magnetic Stainless Steel	Overall Accuracy + PCU (Area) + Weights (Mass)	Issued by NABL ISO/IEC 17025:2017 Accredited Calibration Lab

Table 2

Piston Type	Piston Model	Pressure Ranges		
		1 / bar	2 / Kg/Cm ²	3 / psi
Single	SP-35	0.5 to 35	0.5 to 35	10 to 500
Single	SP-70	0.5 to 70	0.5 to 70	10 to 1000
Single	SP-100	5 to 100	5 to 100	75 to 1500
Single	SP-160	5 to 160	5 to 160	75 to 2500
Single	SP-350	5 to 350	5 to 350	75 to 5000
Single	SP-600	10 to 600	10 to 600	150 to 9000
Single	SP-700	10 to 700	10 to 700	150 to 10000
Dual	DP-160	1 to 160	1 to 160	15 to 2500
Dual	DP-350	1 to 350	1 to 350	15 to 5000
Dual	DP-600	1 to 600	1 to 600	15 to 9000
Dual	DP-700	1 to 700	1 to 700	15 to 10000

STANDARD INCLUSIONS

- Basic Instrument
- Full set of Adaptors consisting of 1/8", 1/4", 3/8", 1/2" BSP (Set of NPT Adaptors available on request)
- Calibrated S.S Weight Sets - Refer Table 1 & 2
- Spirit Level, Pointer Puller / Punch
- Set of Spanners & Screw Driver
- Operating Fluid (500 ml)
- 'O' Ring & Seals
- Dust Cover, Wooden Carrying Case (for Weight Sets)
- DWTCal Calibration Software
- Calibration Certificates are issued in Accordance with our Scope as granted by NABL per ISO/IEC 17025:2017 Standards - Refer Table 1
- Instruction Manual

OPTIONAL (ADD-ON) ITEMS

- Right angled Adaptor
- Two Gauge Adaptor
- Conversion Weight Sets to convert from one unit of Pressure to another
- Incremental Weight Sets for smaller increments of Pressure
- Motorized Version

Dead Weight Tester Software

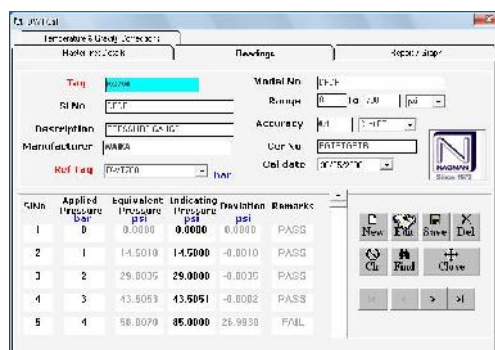
DWTCal

Pressure Calculation, Correction & Certificate Generation Software for Precision Dead Weight Testers

Flexible Working Tool for Easier, Quicker & More Accurate Calibration

SALIENT FEATURES

Menu Driven, easy to use software
Maintain Multiple Dead Weight Tester files
5 Pressure Units
Pre-loaded Calibration Data
Automatic generation of Calibration Certificates
Pressure Equivalent calculations with all corrections applied
Allows users to apply all necessary corrections
(Local Gravity, Pressure Head, Temperature etc.)
to enhance the performance / Accuracy of the Dead Weight Tester
Calibration details are stored and/or automatically inserted into a
Calibration Certificate
Windows XP or higher OS Compatible



Manufactured by

NAGMAN INSTRUMENTS & ELECTRONICS (P) LTD.

Chennai-Bangalore National Highway, Nazarethpet P.O., Chembarambakkam,
Chennai – 600 123. INDIA.

Domestic Sales
Export Sales

Phone : 044 – 66777020, 005, 021, 024.
Phone : +91-44-66777006, 008.

Fax : 044 – 66777050.
Fax : +91-44-66777050.

E-Mail : mktgchennai@nagman.com
E-Mail : exports@nagman.com

www.nagman.com

**AN ISO 9001:2015
CERTIFIED COMPANY**