

High Precision Dead Weight Testers

Hydraulic

H6900N

Bench-top / Table-top Model

Ideal for Fine Increments & for Medium Volume Calibration. Ensures – Easy & Controllable Pressure generation for Calibrating Pressure Gauges / Transducers / Transmitters, Transfer Standards, Recorders, Digital Calibrators etc.

Screw Pump with built-in Priming Pump

SALIENT FEATURES

Engineering Units : bar / Kg/Cm ² / psi (Kpa & Mpa also available)
Adjustable Foot & Spirit Level
Piston Calibrated thro' "Cross Floating Techniques"
Calibrated to Standard Gravity (Optional : Calibration to Local Gravity as per Customer's requirement)
Accuracies Traceable to International Standards
Non-Magnetic Stainless Steel Weight Sets
Calibration Certificate – for overall Accuracy + PCU (Area) + Weights (Mass) from NABL Accredited Lab – as per ISO/IEC 17025:2017
DWTCal Software



Typical Photo. Original Product may vary. Gauge/Indicator not included in Basic Instrument

SPECIFICATIONS

Ranges	1000 / 1200 bar	} Refer Table 2
Piston	Single / Dual	
Standard Accuracy	±0.015% / ±0.01% of Reading	
Traceability	International Standards	} Refer Table 1
Weights	Non-Magnetic Stainless Steel	
Pressure generation	Thro' Priming Pump & Screw Ram	
Standard Corrections	Gravity : 9.80665 m/s ² * / Temperature : 23°C / Air Density : 1.2 Kg/Cm ²	
Weight (approx.)	Instrument : 19 Kg. ; Weight Sets : 8 to 33 Kg.	Refer Table 2
No. of Weights	12 to 15	
Instrument Dimensions	600 x 500 x 360 mm (L x W x H)	
Operating Fluid	Oil	

Table 1

Model	Accuracy	PCU	Weight Set	Certification	Remarks
H6900N	±0.015% of Reading	Tungsten Carbide Piston & Matching Cylinder	Non-Magnetic Stainless Steel	Overall Accuracy + PCU + Weights (Mass)	From ISO/IEC 17025:2017 NABL Accredited Calibration Lab
H6990N	±0.01% of Reading				

Table 2

Piston Type	Piston Model	Pressure Ranges		
		1 / bar	2 / Kg/Cm ²	3 / psi
Single	SP-1000	10 to 1000	10 to 1000	150 to 15000
Single	SP-1200	10 to 1200	10 to 1200	150 to 18000
Dual	DP-1000	1 to 1000	1 to 1000	15 to 15000
Dual	DP-1200	1 to 1200	1 to 1200	15 to 18000

STANDARD INCLUSIONS

- Basic Instrument
- Calibrated Stainless Steel Weight Sets Refer Table 1 & 2
- Full set of Adaptors consisting of 1/8", 1/4", 3/8", 1/2" BSP (Set of NPT Adaptors available on request)
- Operating Fluid (500 ml)
- Spirit Level, Pointer Puller / Punch
- Set of Spanners & Screw Driver
- 'O' Ring & Seals
- Wooden Carrying Case (for Weight Sets)
- Instruction Manual
- DWTCal Calibration Software
- Calibration Certificates are issued in Accordance with our Scope as granted by NABL per ISO/IEC 17025:2017 Standards - Refer Table 1

OPTIONAL (ADD-ON) ITEMS

- Right angled Adaptor
- Two Gauge Adaptor
- Conversion Weight Sets to convert from one unit of Pressure to another
- Incremental Weight Sets for smaller increments of Pressure

Dead Weight Tester Software

DWTCal

Pressure Calculation, Correction & Certificate Generation Software for Precision Dead Weight Testers

Flexible Working Tool for Easier, Quicker & More Accurate Calibration

SALIENT FEATURES

Menu Driven, easy to use software

Maintain Multiple Dead Weight Tester files

5 Pressure Units

Pre-loaded Calibration Data

Automatic generation of Calibration Certificates

Pressure Equivalent calculations with all corrections applied

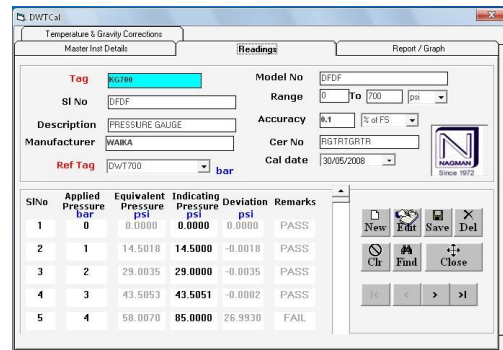
Allows users to apply all necessary corrections

(Local Gravity, Pressure Head, Temperature etc.)

to enhance the performance / Accuracy of the Dead Weight Tester

Calibration details are stored and/or automatically inserted into a Calibration Certificate

Windows XP or higher OS Compatible



Manufactured by



Since 1972

NAGMAN INSTRUMENTS AND ELECTRONICS PRIVATE LIMITED

AN ISO 9001:2015 CERTIFIED COMPANY

170/1a2, Chennai Bangalore Highway Road, Sembarambakkam, Chennai – 600 123. INDIA.

Phone - Domestic Sales 044-6677 7024, 044-6677 7005 Email : mktgchennai@nagman.com

Phone - Export Sales +91-44-6677 7025. Email : exports@nagman.com

www.nagman.com



Specifications subject to change owing to continuous development. Contact us for latest Datasheet.

NIE/TDS/H6900N/2309/00